



New

# CHISON Q8

Compact · Innovative · Powerful

# Compact In Size Powerful Inside



- 4D upgradeable
- TDI quantitative cardiac analysis
- THI on all probes
- Double Phase Digital Beam Forming (DPDBF)
- Probe elements up to 256
- Two probe connectors





CHISON Q8 is a multi-purpose, all digital, portable Color Doppler ultrasound system, which supports probes up to 256 elements. It provides high-performance, full-featured imaging in a compact design that weighs 10 times less.

With its cutting-edge technologies, Q8 is one of few pioneers in the world, which incorporate sophisticated features like real-time 4D, TDI, and TEE scanning into one completely portable box.

A Work-flow oriented User Interface is built to allow user-friendly operation with minimum soft key entry. Ergonomical design of keyboard, double probe connectors, USB and DICOM connectivity make your scan FAST and EASY, and allow you to focus more on your patients.



Plus  
...

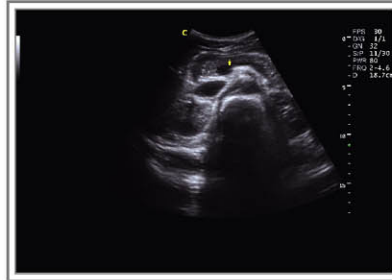


# Shared Service, Premium

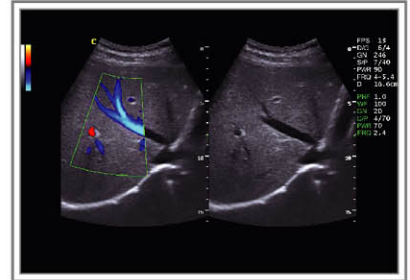
## Abdominal



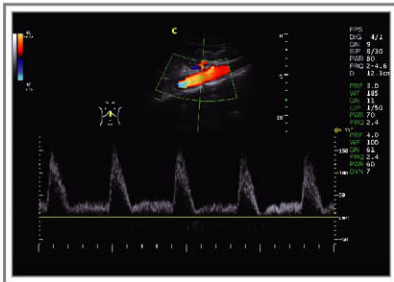
Kidney, PD Mode



Pancreas, B Mode



Liver, B/BC Mode



Aorta, D Mode

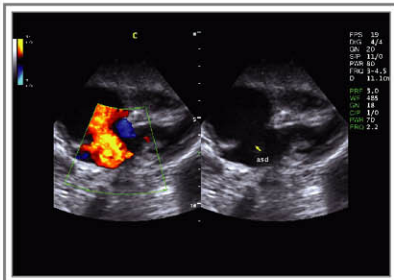


Liver, Direct PD Mode

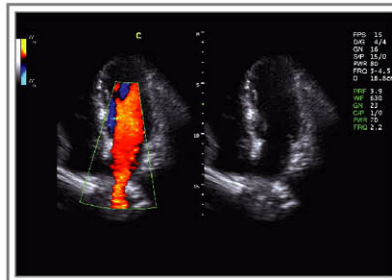


Kidney, CFM Mode

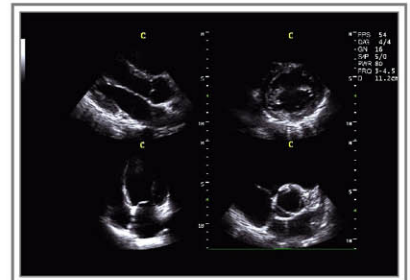
## Cardiac



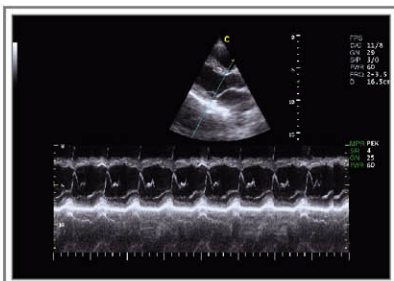
ASD, B/BC Mode



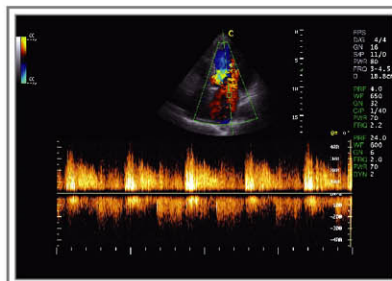
Blood flow of Pulmonary Vein  
B/BC Mode-17cm penetration



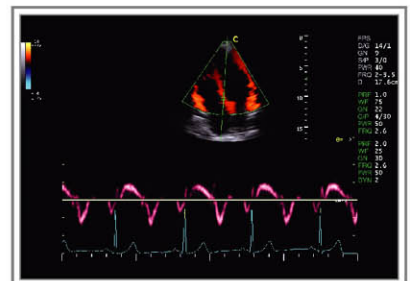
Different Cardiac plane, 4B Mode



LV long axis, Free Steering M Mode

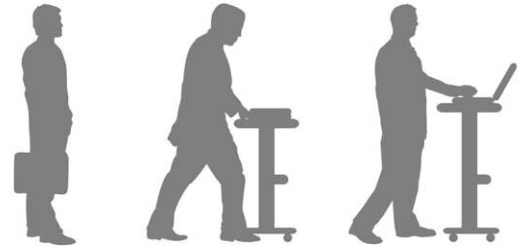


Regurgitation of Mitral valve, CW Mode



Ventricular Septa, TDI Mode-ECG

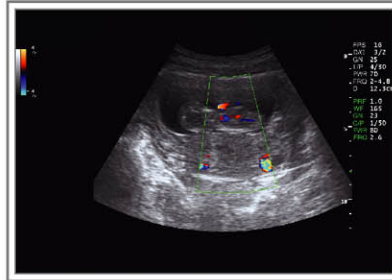
# m Images



## OB & GYN



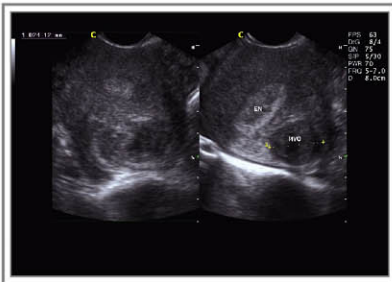
Early pregnancy, B Mode



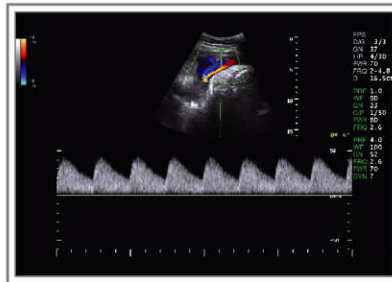
Fetal Heart, CFM Mode



Fetal Face, 27Weeks



Hysteromyoma, 2B Mode

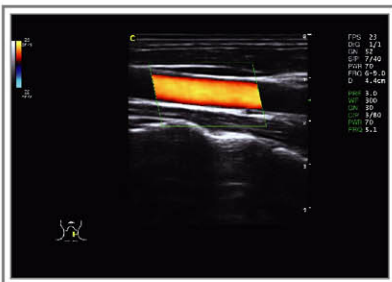


Umbilical Cord, D Mode

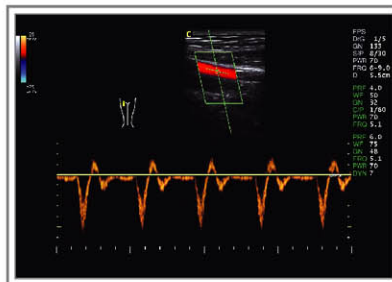


Uterine, B Mode

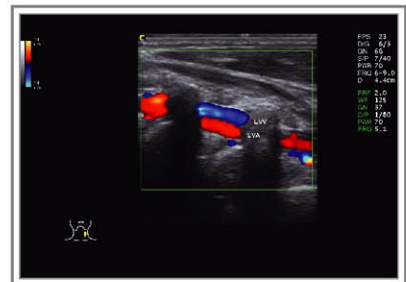
## Vascular and Small parts



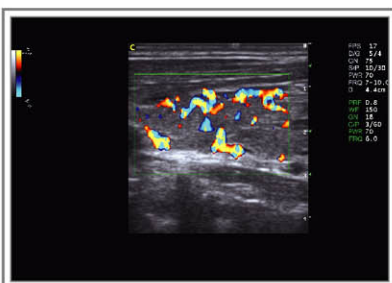
Carotid Artery, CFM Mode



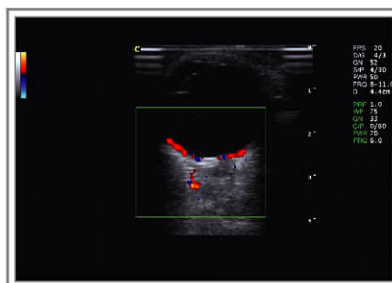
Popliteal vein, PW Mode



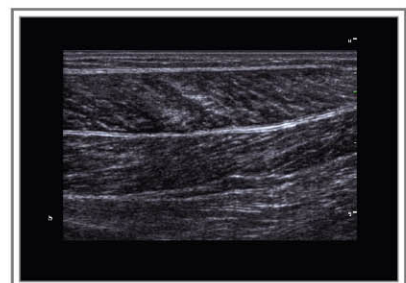
Cervical vertebral artery, CFM Mode



Thyroid Inferno, CFM Mode



Ophthalmic artery, CFM Mode

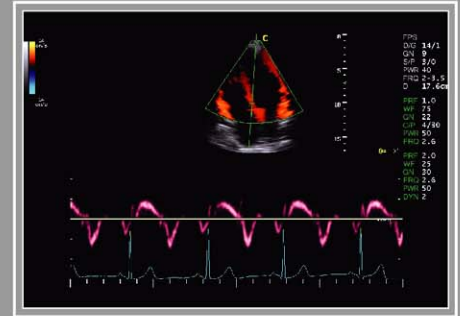


Muscle of Leg, Panoramic

# State-of-the-art technology

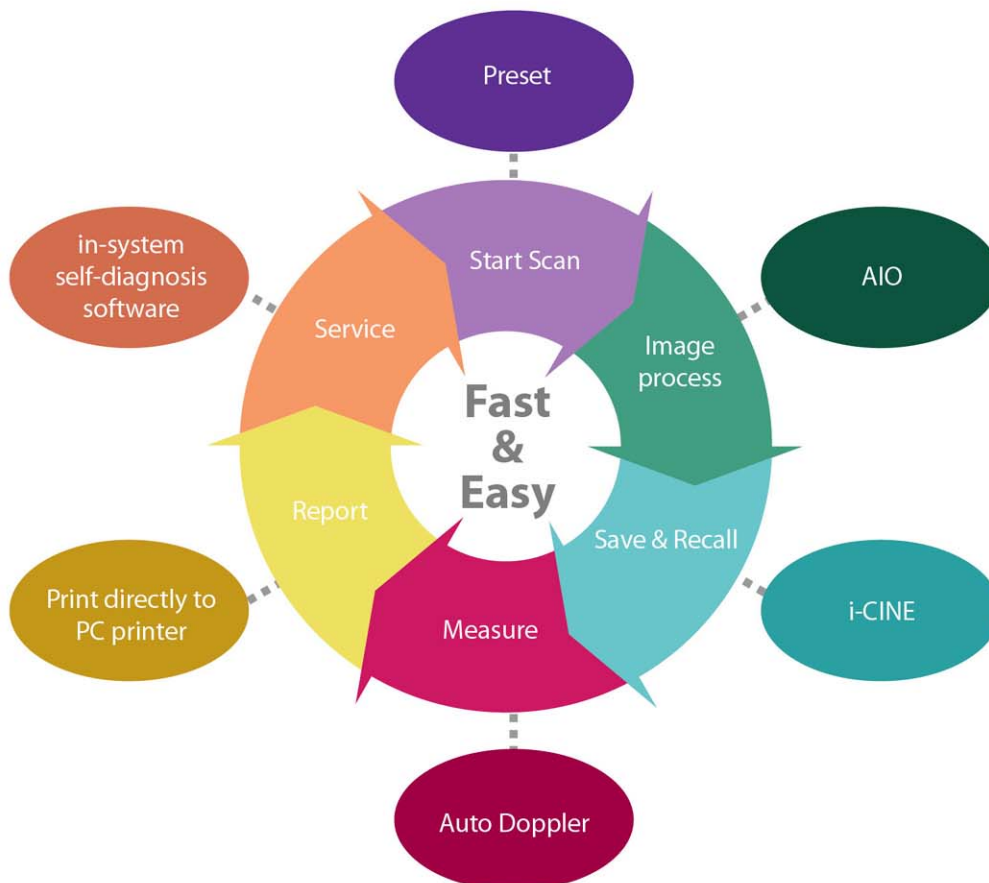
## Tissue Doppler Imaging (TDI)

Tissue Doppler imaging is a novel echocardiography technique that directly measures myocardial velocity. Systolic TD measurements assess left and right ventricular myocardial contractile function. Diastolic TD values reflect myocardial relaxation.



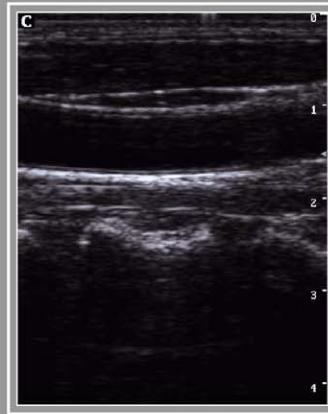
Ventricular Septa, TDI Mode-ECG

# Work-flow solution

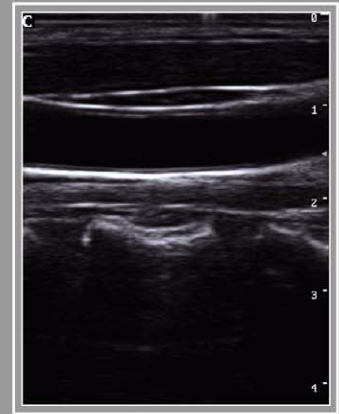


# ogies

## Speckle Reduction Algorithm (SRA)



Normal



SRA

## Ergonomical Design



Two Probe Connectors



Shortcut keys



USB, DICOM



15"LCD



# Specifications

## Imaging modes

- B, 2B, 4B, B/M
- B/BC, CFM, Color M
- PW, HPRF, CW
- PD, Directional PD
- TDI(Tissue Doppler Color, Tissue Doppler PW)
- Instant Triplex, Duplex
- Trapezoidal, Panoramic
- Free Steering M
- Free-Hand 3D, Real-time 4D
- Chroma B/M/PW/CW

## Probe

- Electronic Convex, Linear, Transvaginal, Phased array, Pediatric probes
- Wideband(broadband) Multi-frequency

## Image processing technology

- Double Phase Digital Beam Forming (DPDBF)
- THI on all probes
- Speckle Reduction Algorithm (SRA)
- Multiple Compound Imaging (MCI)
- i-Image™

## Measurement & Report packages

- OB&GYN
- Cardiac
- Vascular
- Urology

## Professional Clinical Applications

- Abdominal
- OB & GYN
- Cardiac
- Vascular and Small parts
- Pediatric
- Neonatal
- Musculoskeletal

## Standard configuration

Main unit, 3.5 MHz Convex probe, 7.5MHz Linear probe, 15" LCD, 2 probe connectors, Hard disk (160GB), 2 USB ports

## Options

- 6.0MHz Transvaginal probe
- 3.0MHz Phased array probe
- 5.0MHz Pediatric probe
- 5.0MHz TEE probe (Adult)
- Free-hand 3D
- Real-time 4D package:  
4D software and 4D Volume probe
- Extended Cardiac Package: ECG, Free Steering M, CW, Panoramic, Color M, TDI
- Video printer, PC printer
- i-Image™
- Trolley
- DICOM

[www.chison.com.cn](http://www.chison.com.cn)

**CHISON MEDICAL IMAGING CO., LTD.**

ADD: No. 9 Xin Hui Huan Road, New District, Wuxi City, Jiang Su Province, China 214028

TEL: 0086-510-85310593 / 85310937 FAX: 0086-510-85310726

EMAIL: [export@chison.com.cn](mailto:export@chison.com.cn)

We reserve the right to make changes to this catalogue without prior notice

EQ8 090316